

HOT SWAP BYPASS GENERATOR OPTION

FEATURES

- Auto sensing to generator input.
- Auto Bypass to line if generator is removed.
- Full relay interlock system prevents utility back feed.
- LED operation and function status of UPS and Generator.
- Failsafe to line under any fail of the UPS or Generator.
- Break Before Make design at Zero Crossing of the sine wave prevents surge and back feed.



SPECIFICATIONS:

Construction: Aluminum

Voltage: 120VAC

Rating: 30 amps continuous UPS / Line
30 amps continuous Generator/UPS

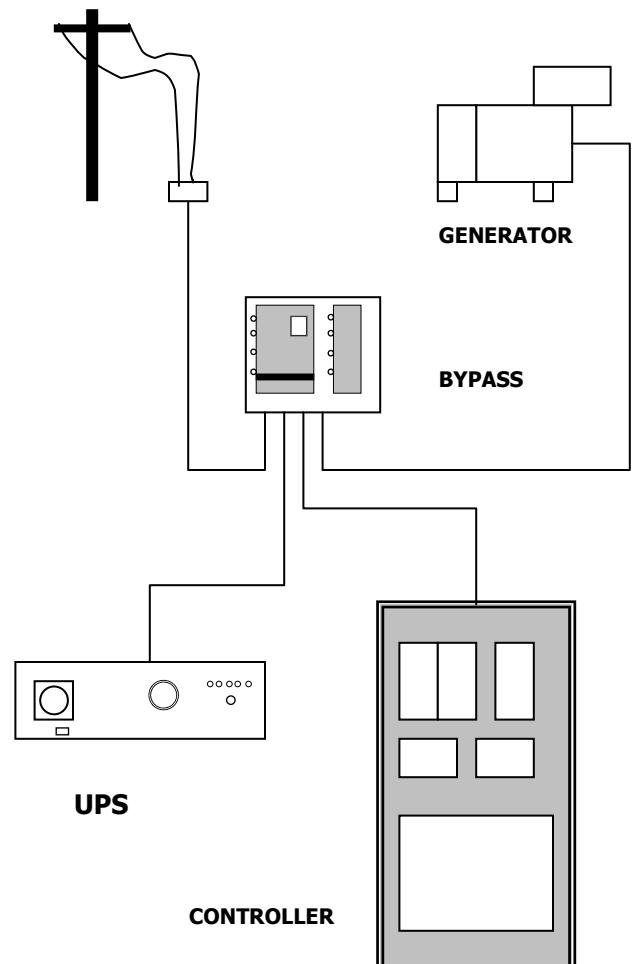
Controls: Two button, one for UPS /Auto/ Bypass
And one for Generator/UPS Bypass.

Transfer: 10ms to line if utility is present.

Connections: Standard Anderson Power Pole to UPS
Connector. With separate neutral and
and conductors for generator

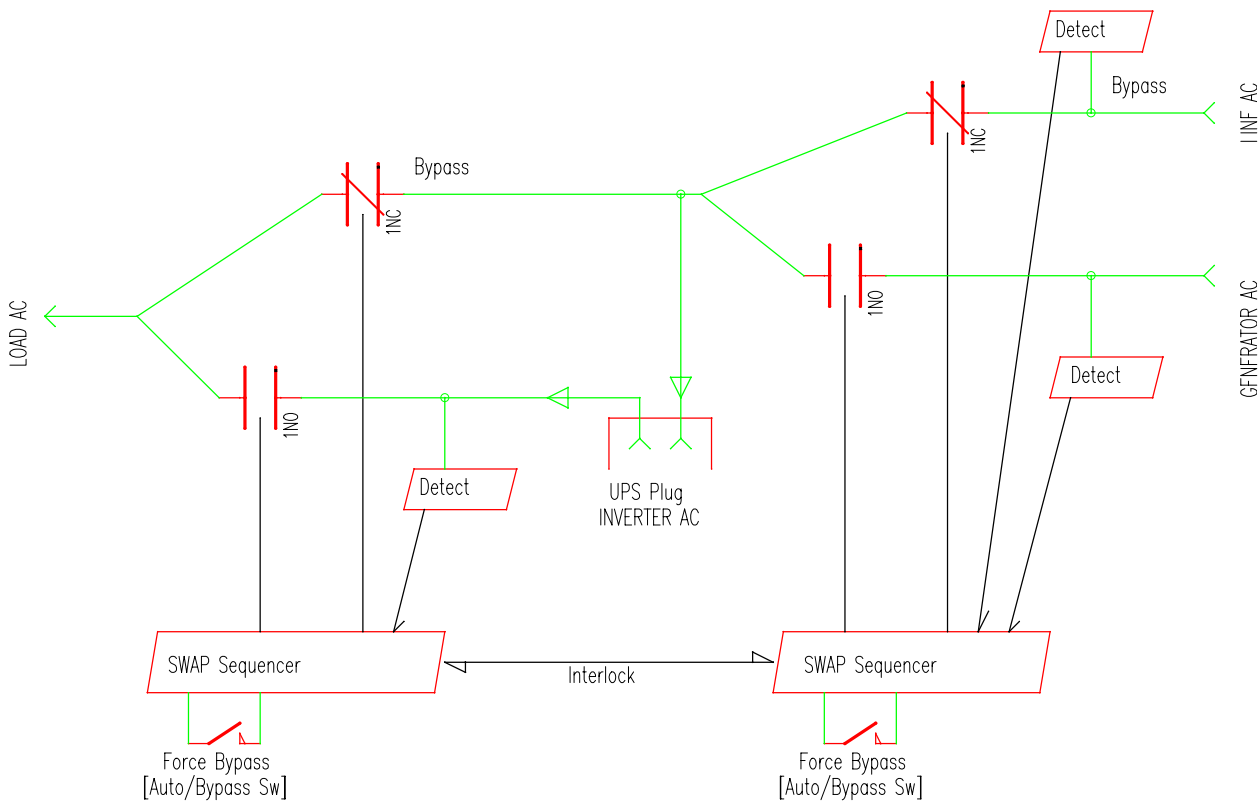
Interlock: Full relay interlock to line only prevents UPS
or generator from supplying any voltage to the
utility under any load or line/UPS condition.

Indicators: Bypass UPS, Auto UPS, UPS Available,
Line Available, Bypass-Generator, Auto
Generator, Generator Available.



TECHPOWER DEVELOPMENTS

HOT-SWAP GENERATOR Bypass System



DUAL HOT SWAP – Functional Diagram

BASIC OPERATION

- *Threshold detectors reporting to the Swap Sequencers sense all power sources.
- *The Sequencers control the power relays in a timed break before make operation to ensure secure transfer of power sources with minimum power interruption(20msec).
- *The Auto/Bypass switches select Auto transfer or Forced Bypass modes for each stage.
- *In Auto mode for the first stage, the generator AC input is selected as soon as it is plugged in and detected as available.
- *In Auto mode for the second stage, the UPS AC input is selected if detected as available. Normally, the UPS system is in Standby mode [input line to UPS output], and charging the battery bank from the input AC from the first stage Swap output.
- *The Hot-Swap system properly handles connection and disconnection of live power sources, automatically transferring the Load to the preferred and available source.