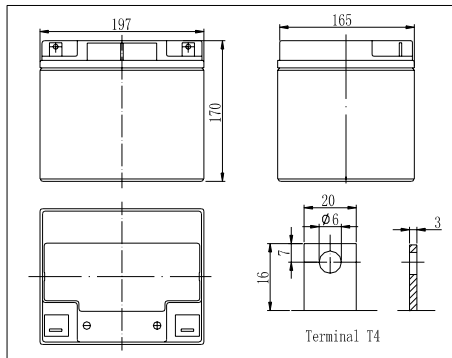


**Dimensions**

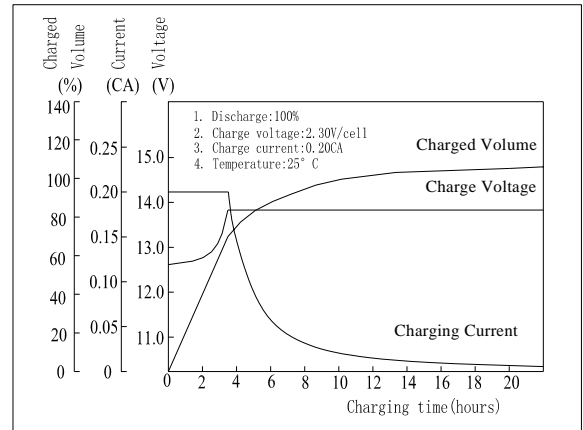


**Specifications**

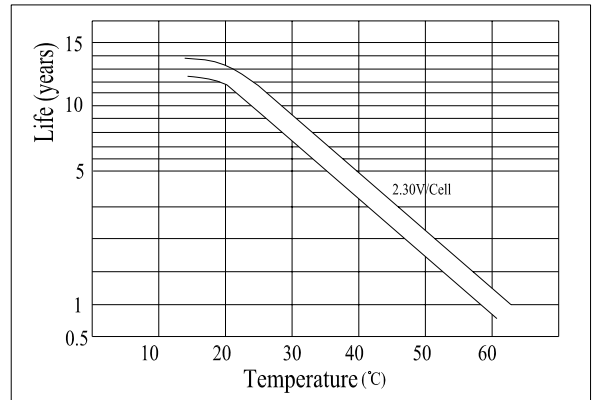
Nominal Voltage		12 V
Capacity(10HR, 25°C)		45Ah
Dimension	Length	197mm (7.76inch)
	Width	165mm (6.50inch)
	Height	170mm (6.69inch)
	Total Height	170mm (6.69inch)
Approx. Weight		13.5kg (29.8lbs)
Internal resistance (Fully charged, 25°C)		Approx. 9.5mΩ
Capacity affected by temperature (10HR)	65°C	108%
	55°C	105%
	25°C	100%
	0°C	85%
	-15°C	65%
Self-discharge (25°C)	3 month	Remaining Capacity: 91%
	6 month	Remaining Capacity: 82%
	12 month	Remaining Capacity: 65%
Nominal operating temperature		25°C ± 3°C (77°F ± 5°F)
Operating temperature range		-15°C ~ 70°C (5°F ~ 158°F)
Float charging voltage(25°C)		13.50 to 13.80V
Cyclic charging voltage(25°C)		14.50 to 14.90V
Maximum charging current		12A
Terminal material		Copper
Maximum discharge current		400A(5 sec.)

- ◆ Absorbent glass mat technology;
- ◆ Recognized by UL & CE;
- ◆ ABS container.

**Charging Characteristics(25°C)**



**Temperature Affects On Floating Life**



Note: Floating life at 20°C designed for 10 to 12 years.

**Constant Current Discharge Characteristics (A, 25°C)**

F.V/TIME	5min	10min	15min	30min	60min	3h	5h	10h	20h
9.60V	118	79.0	66.0	38.8	26.0	10.4	7.31	4.06	2.10
10.2V	112	74.6	63.3	37.2	25.0	10.2	7.20	4.02	2.10
10.8V	106	70.2	60.2	35.4	23.7	10.0	7.06	4.00	2.05

**Constant Power Discharge Characteristics (Watt, 25°C)**

F.V/TIME	5min	10min	15min	30min	60min	3h	5h	10h	20h
9.60V	243	849	724	435	296	122	86.4	48.5	25.2
10.2V	1180	806	695	418	285	120	85.1	48.0	25.2
10.8V	1110	758	661	397	270	118	83.4	48.0	24.6